

Summer Newsletter

Newsletter | Term 4 2018

Charities Number CC38900

From the President

Well, what to say... rain and more rain! I don't think we can remember when it's been this wet for this long.

We've had another great year at CRDA and are always looking at ways to improve our facility and programmes.

Next year we are looking to increase our equine team even more, by purchasing three new horses/ponies. So please keep your ears to the ground for us! (up to 14h ponies)

There are many of you to thank for making 2018 such a good year at CRDA. Every donation, no matter what shape or size, is always welcomed and very much appreciated, so thank you to all our donors big and small.

We are continuously looking for more Volunteers to join our CRDA family too, so if you, or someone you know is interested, please get in touch with our Volunteer Coordinator Annette 021 1744 096 or volunteers@chchrda.org.nz

RDA will start back for the year the first Monday in February, but we will not run on Waitangi Day. Please confirm with your Coach as to your days start date and keep up to date on Facebook.

Lastly, a big thank you to our dedicated Volunteers, Coaches, Committee, Staff, and let's not forget our amazing horses. We couldn't do it without all of you.

Well, all that is left to say is I hope you all have a great Christmas and a relaxing Summer holiday, and I look forward to seeing you all again in February.

Jayne Findlay



Therapist's Corner

Summer Holidays - The Importance of Having a Break

How quickly Christmas and the end of the year have come around! This year has been wonderfully busy and that reminds us that it's time to have a deserved break.

Riders, Coaches and Horses need the holidays to recharge their batteries and refresh themselves, to be ready for the next year. It is necessary to have a break from our normal routine, otherwise, our body and our mind will express through different ways, such as stress or illness.

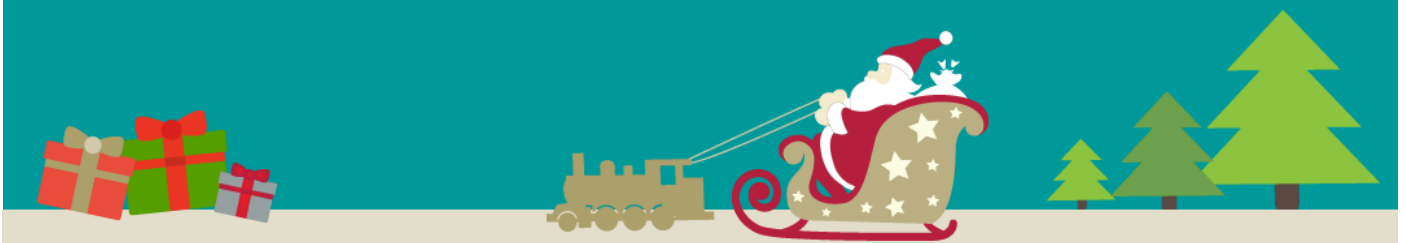
On a positive note, breaks are great for bringing us back to reality for ourselves. Holidays have the potential to break into the stress cycle. We can come back feeling ready to take over the world again.

We gain perspective on our problems, get to relax with our families and friends, and get a break from our usual routines.

So keep it simple, affordable and fun. The key for this holidays season is enjoy spending time with your family and friends.

I wish you all a wonderful holidays season full of love and family time.

Denisse Aldunce Cossio



Rider's Rep

Hello to all Riders and their families! We are now fast approaching the end of another year, and hopefully one in which there have been many positive experiences for all of you. We certainly hope that your time attending your riding program at the Christchurch RDA has been one of these experiences and that you feel that you will be finishing this year with us on a positive note. We have enjoyed having you on board with us, and watching the progress that you have all made this year. Well done, to all of you!

My many thanks to all who have completed our rider's satisfaction questionnaire during the year, and thank you for your feedback regarding your experiences, as this information is most helpful to us in the fine tuning of our programs. To those of you who will be finishing up with us at the end of this term, we would be most grateful if you too could spend just a little time completing the questionnaire, and perhaps you may wish to be added to our waiting list for future re-enrolment to another CRDA program? Thank you!

I would also like to remind you all, that should you ever feel the need to raise any concerns or issues regarding your RDA experience, then please feel free to contact me at any time, by telephone or email, and I will be most happy to listen to you and discuss your concerns. My contact details are contained herein.

Well, there only remains to thank you once again for your participation with us this year, and to wish you all a very Merry Christmas and a Happy New Year! The way that the weather seems to be behaving at the moment, we could well have snow at Christmas! ... but let's hope not! Whatever the case, please stay warm and happy, and we look forward to seeing you again soon! My very best wishes to you all.

Charles Taylor 022 684 9060 or charlestaylor@xtra.co.nz

Horse Care

Firstly, a HUGE thanks to all Volunteers for bringing the horses in every morning, no matter what the weather is doing!

This year we have farewelled Mystery, Toddy, Gypsy, Syd and Fred. All of these ponies had a colourful innings at RDA, leaving us and the riders with many fond memories. During this time we have also welcomed Charlie, Pollyanna and Minnie to the team. It is hard to find that special RDA horse, but the newbies all seem to be really enjoying the job.

Lastly, big celebrations to Saffy and Cricket who will both turn 25 during the Summer holidays! (January). These two are a pleasure to work with, still doing their fair share of the work, and they are so well! I'm so proud of them. ❤️

Merry Christmas everyone!

Em :)

**THE 25
CLUB!**



Arena Hires

Another exceptionally busy year has gone by. The Arena has become an extremely utilised event centre outside of CRDA's operating hours. Hopefully some of you may have had the opportunity to attend an event here.

A great equine pleaser was Equidays. This was held over 3 days at Labour Weekend. Their night shows were amazingly entertaining and the day clinicians are very popular, with world class trainers. And then of course there are the retail shops for a bargain!

The Canterbury A&P Show was also well supported. Great weather drew in huge crowds.

Another event of interest this year was the NZ Alpaca Show, held in the October school holidays, with the venue housing 300 Alpacas over the 6 days.

Hopefully next years calendar will bring as many diverse hires. This money helps subsidise our rider fees, and also helps with the ongoing costs that come with a facility this size. If you are interested in booking the venue please get in touch.

Christine Fitzsimon 027 550 3682



Thank You

The Christchurch Schools' Music Festival was held over 3 lovely nights at Horncastle Arena. CRDA was asked to be the charity collecting over the festival, raising a total of \$700.

A special thank you to CHCH Schools' Music for topping our donation up by \$300 to total \$1,000.



The Christchurch Earthquake Recovery Trust supported our Administrator with our grant approved once again for Admin wages.

We are sincerely grateful for CERT's help and value their continued support as it goes a long way with helping us continue our therapeutic riding programmes.



Huge thank you to the Elizabeth Ball Charitable Trust who made a very generous donation of \$8,000 earlier this month. This money will go towards our annual hay purchase. We are, as always, extremely grateful for the support the Elizabeth Ball Charitable Trust shows us each year.

Don't Forget!

CRDA Christmas Dinner

Friday 7th December 6:30pm

The Talbot @ Yaldhurst

\$30 per person

Book through CRDA office

2019 Dates

Wed 30th Jan

Volunteer & Horse Refresher Workshop

Thu 31st Jan

New Volunteer Introductory Workshop

Mon 4th Feb

RDA Starts for 2019

Wed 6th Feb

Waitangi Day **NO RDA**

A very special thank you to Malcolm Gallagher for his generosity. Over the last term Malcolm has donated engraved rider trophies, posters for rider prizes, caps, collection of racing silks for rider dress-ups, along with numerous cash donations. All delivered with a warm smile and a good chat. Thank you Malcolm, you are a treasure.



Malcolm with donated rider trophies

Horse Sponsors

Thank you very much to those who have sponsored horses this term for another year:

Lions Club of Selwyn

Wendy Workman

Vivian Hooper

Joy Cleland

Maureen Schumacher

Soroptimist International Chch

Mike & Carolyn Rachlin

Ian & Mariana Hooper

Waihora Pony Club

Debbie Fleming

Kay Voice

Sarah Kinsey

Donors

Sitjes Family

Elizabeth Ball Charitable Trust

Cyclone Computers

Chch Earthquake Recovery Trust

Sumner Valley Riding School

Ms. V A Vuleta

Chch Schools' Music Festival

Scout & Guide Fellowship

Nigel Allen

Alan Pullar Family Trust

Bruce McCullum

Take HeART Expo

Lisa Hadfield

Malcolm Gallagher

EasyGiving Donors

Margaret Overton

We Need Sponsors!



Pollyanna



Charlie



Spatz

Thank you

Sponsors and Donors are an integral part of C.R.D.A.

Without support from sponsors C.R.D.A. would not be able to function and continue to deliver our therapeutic riding sessions.

Please show your support by utilising the services and products of our sponsors at every opportunity.

Horse Sponsorships are \$50.00 minimum or businesses \$150.00 towards each horse.

Sponsors receive a laminated certificate with a photo of your chosen horse/s.

See next page..

Sponsorship Form

email this form to: admin@chchrda.org.nz or post to the Administrator, PO Box 6163, Sockburn, Christchurch 8443

Name of sponsor _____

Address _____

Email _____

Sponsorships are minimum \$50.00 (businesses \$150.00) for each horse for 12 months.

Please find enclosed my cheque / direct credit for \$ _____

In the event of my sponsored horse no longer being of service to Christchurch Riding for the Disabled, I understand my sponsorship will transfer to another pony/horse of my choice.

I Agree / Do Not Agree for my name to be published in our newsletter.

Online sponsorships can be made to:

Chch Riding for the Disabled

03 0802 0100281 00

SIGNED _____

DATE _____

**WHY NOT SPONSOR A
HORSE FOR CHRISTMAS!**

**CONTACT THE OFFICE BEFORE
DECEMBER 14TH TO MAKE
YOUR SPONSORSHIP A GIFT**

Name	Height (hh)	Colour	Breed	Sex	Sponsor
					Tick Below
Blokey	13.1	Chestnut	NZ Riding Pony	G	
Charlie	15.2	Pinto	Clydie Cross	G	
Chippy	14.2	Chestnut	Station Bred	G	
Cricket	13.1	Grey	Arabian / Welsh	G	
Paddy	14.0	Dapple Grey	Connemara	G	
Pollyanna	11.2	Grey	Arabian / Welsh	M	
Rocco	14.2	Chestnut	Station Bred	G	
Rosie	13.2	Grey	NZ Riding Pony	M	
Saffy	15.3	Chestnut	Dutch Warmblood	M	
Sammy	15.2	Bay	Station Bred	M	
Spatz	14.2	Black	Clydie / Welsh / English RP	G	

Volunteers

**Do you enjoy working with Horses and or Special Needs persons?
Christchurch Riding for the Disabled needs Volunteer Assistants!**

Christchurch Riding for the Disabled has an Indoor Equestrian Centre situated inside Canterbury Agricultural Park, off Curletts Road. We hold sessions from 9:00 to 2:30 each weekday during school terms. Our Coaches depend on volunteers to lead horses and work with riders. Training is given to enable volunteers to feel confident and safe. If you are over 16 years old and can give a few hours to our worthy and satisfying sessions, please contact us with your preferred day. Thank you.

**Please contact Annette - Volunteer Coordinator 021 174 4096 or
volunteers@chchrda.org.nz**

We have had a wonderful response from radio adverts and our many leaflets being displayed on various Community Notice Boards. However, we still need your help - if you can spare one day a week to assist our wonderful Coaches in their efforts to give our Riders the benefit of a therapeutic riding session we would be most grateful.

About C.R.D.A.

We are one of 56 Riding for the Disabled groups throughout NZ that provide therapeutic riding and horse care sessions for people with disabilities. Depending upon the personnel and horses available we provide group sessions that combine therapy, education, sport and recreation. Individual sessions range from special needs school groups, to IHC and rehabilitation groups. All RDA groups are affiliated to a national body, NZRDA.

All the groups are incorporated volunteer organizations who raise their own funds, train volunteers and provide therapeutic riding sessions.

No government funding is provided.



Contact Us

C.R.D.A.
Northcote Drive / Inside
Canterbury Agricultural
Park / Wigram /
Christchurch 8025

P O Box 6163
Sockburn
Christchurch 8443

Phone
03 348 4374

E-mail
admin@chchrda.org.nz

Arena Booking Enquires
Christine Fitzsimon
027 550 3682
arenahire@chchrda.org.nz

Every cent counts and postage costs !

*If you no longer wish to
receive this newsletter or you
would prefer to receive it by
email then please call the office
on 348 4374 or email:
admin@chchrda.org.nz*

WISHING ALL OUR CRDA FAMILIES, FRIENDS & SUPPORTERS A VERY MERRY CHRISTMAS



C.R.D.A.
PO BOX 6163
SOCKBURN
CHRISTCHURCH 8443

ADDRESS LABEL

PLACE
STAMP
HERE